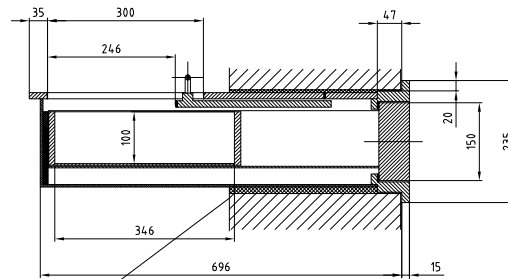


view with drawn-in carriage



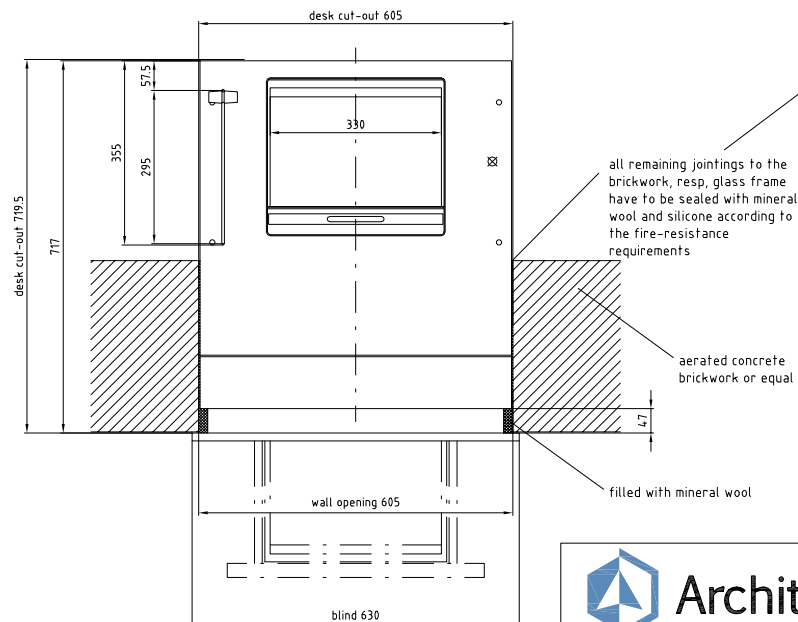
From the outside, the front-opening counter will be pushed into the ready cut-out. In case the strength of wall (less than 500 mm) is too small, the unit needs to be supported at the inside.

The casing has to be cladded by third party at the inside.

The drive is manually.

Although the unit is produced with greatest care, after long operation repairs might become necessary. Therefore it should be possible to pull out the unit to the outside.

Subject to alterations.



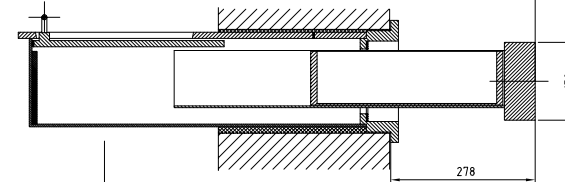
all remaining jointings to the brickwork, resp. glass frame have to be sealed with mineral wool and silicone according to the fire-resistance requirements

aerated concrete brickwork or equal

filled with mineral wool

the unit has to be supported at the inner side

view with pulled-out carriage



## EI90 Front Opening Transaction Tray Without Speech

**Part Numbers**  
**EI90/630/696 AI Lacq**  
**EI90/630/696 SS**

REV	DESCRIPTION	DATE
REVISIONS		
DWG. NO:		
TITLE:	EI90 Front Opening Transaction Tray Without Speech	
<small>FOR ILLUSTRATIVE PURPOSES ONLY. DO NOT SCALE FROM THIS DRAWING. ALL DIMENSIONS TO BE VERIFIED ON SITE. UNLESS OTHERWISE SPECIFIED, DIMENSIONS ARE IN MM.</small> <small>THIS DRAWING/SPECIFICATION REMAINS THE COPYRIGHT OF ARCHITECTURAL ARMOUR AND MUST NOT BE COPIED IN ANY FORM WHATSOEVER WITHOUT PRIOR WRITTEN PERMISSION.</small>		

 **Architectural Armour**

+44(0)1981 257000 sales@architecturalarmour.com  
 www.architecturalarmour.com

4 The Courtyard, Station Rd, Dullingham. CB9 9UP. UK

DRAWN	INITIALS
APP'VD	
SCALE	1:10@A3
WEIGHT	