

Safety & Features



- Secure Window with large sliding drawer
- Electronic speech transfer
- External window and drawer finish flush with external facade
- Large drawer for merchandise
- Model NPW is suitable for internal and external use
- Easy to install
- The unit requires a 13 amp power supply
- Other styles of Interior and Exterior, Physical Attach and Bullet resistant Transaction Windows are available
- Bespoke sizes and specifications made on request

Application

Model NPW provides a safe environment for staff to effectively transact with customers.

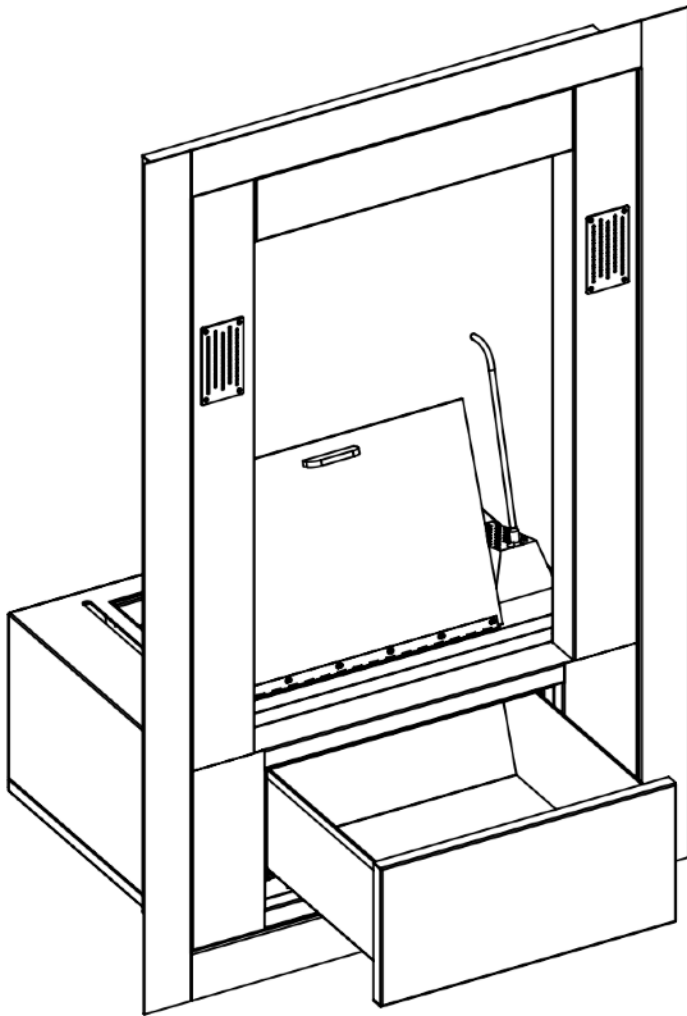
Typical applications are petrol stations, pharmacies, cashiers, out of hours and lone worker protection



Architectural Armour

Night Pay Window

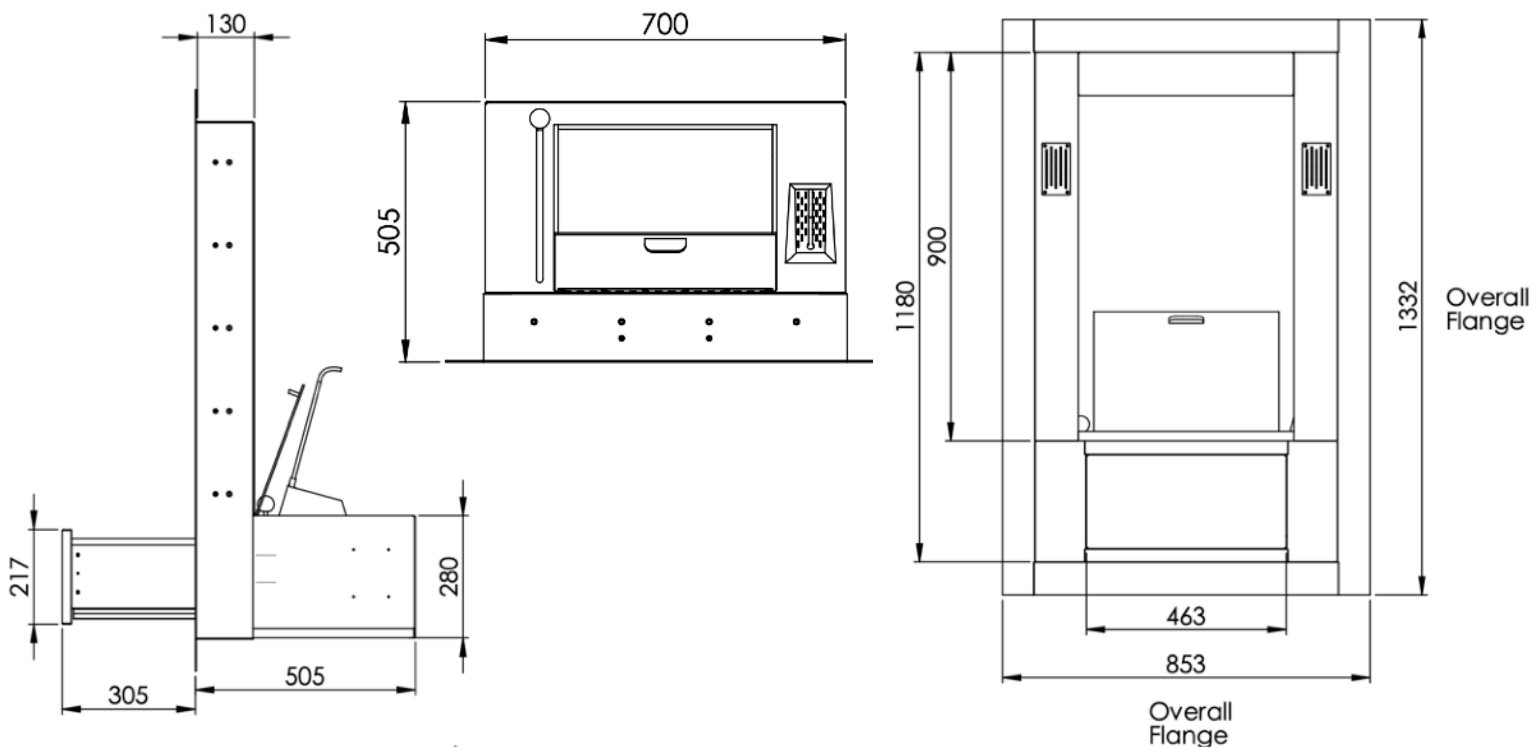
Model NPW



Materials

- Stainless Steel Counter top
- Stainless Steel base
- Welded stainless steel speech frame
- Standard product glazed with EN1063 BR NS glass.
- Alternative glass available; BR4NS/LPS1270 SR3 Double Glazed Unit or EN356 P6B Manual Attack

Suggested Aperture
715mm x 1195mm



 **Architectural Armour**

For our full range of Bullet, Blast & Attack Resistant Windows Walls and Doors contact
+44(0)1981 257000 sales@architecturalarmour.com www.architecturalarmour.com