

Transaction Window

Bulk Cash and Document transfer tray

Model SW2

Safety & Features

- Secure Window with sliding transaction combination tray
- Natural speech transfer
- EN356 P6B Physical attack resistant security glass
- The tray is suitable for handling documents up to A3 and loose cash on the upper section and larger items in the deep tray below
- Model SW2 is suitable for internal and some covered external applications
- Easy to install
- The unit requires no maintenance
- Other styles of Interior and Exterior, Physical Attack and Bullet Resistant Transaction Windows are available
- Bespoke sizes and specifications made on request



Tray clearance

	Height	Width
Shallow	24mm	320mm
Deep	100mm	300mm

Application

Model SW2 provides a safe environment for staff to effectively transact with customers

Typical applications are reception, cashiers, pharmacy windows, ticket offices, currency exchange and lone worker protection



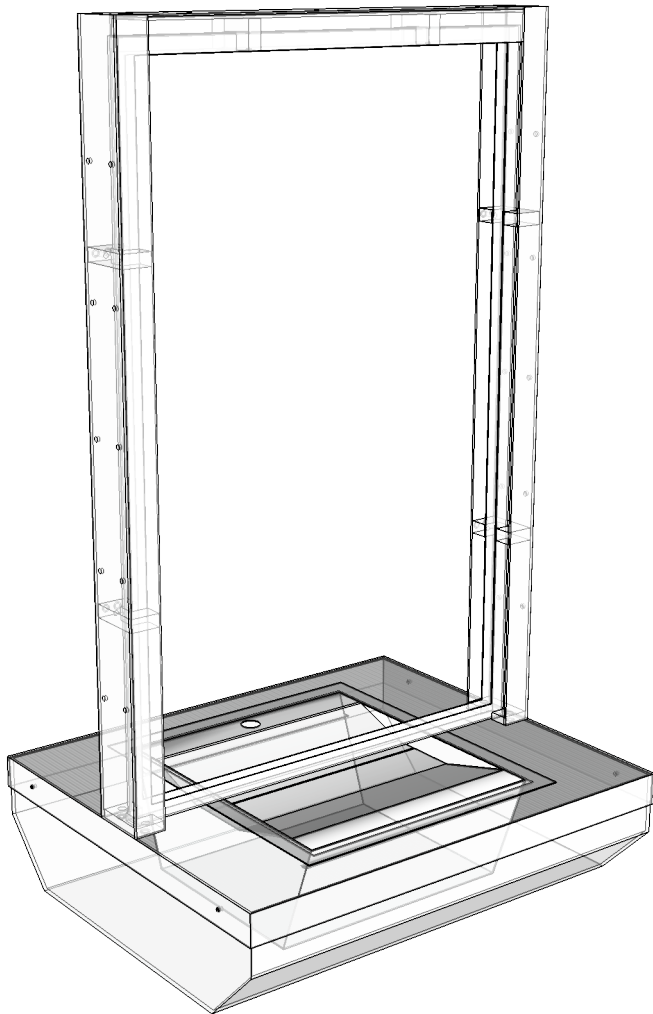
Architectural Armour

For our full range of Bullet, Blast & Attack Resistant Windows Walls and Doors contact
+44(0)1981 257000 sales@architecturalarmour.com www.architecturalarmour.com

Transaction Window

Bulk Cash and Document transfer tray

Model SW2

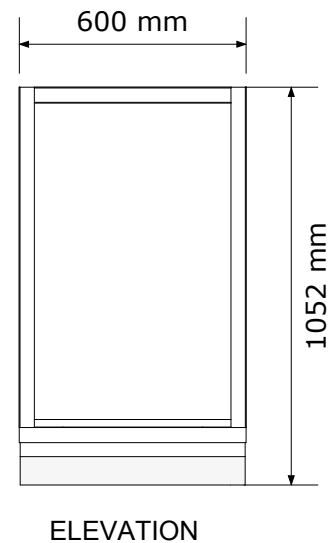
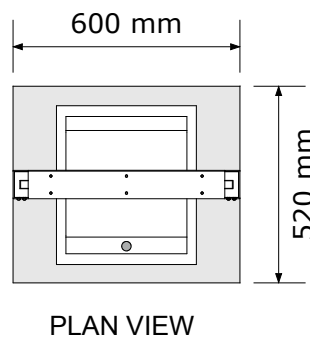
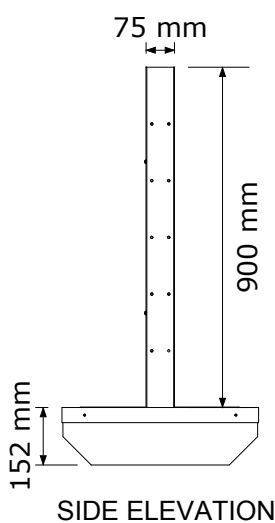


Materials

- Stainless Steel Counter top
- Stainless steel Combination transaction tray
- Laminated security glass
- Mild steel sub base
- Welded Mild steel speech frame painted grey Other colours available

Suggested Wall Aperture

605mm x 1060mm



Architectural Armour

For our full range of Bullet, Blast & Attack Resistant Windows Walls and Doors contact
+44(0)1981 257000 **sales@architecturalarmour.com** **www.architecturalarmour.com**